

# PROACT.®

REFERENCE : PA358

SIZES : XS\_S\_M\_L\_XL\_XXL\_3XL

**COMPOSITION :**

Main fabric : Polyester / Viscose / Elastane Tech fleece 79/15/6

- 310 79%polyester / 15%viscose / 6%elastane

Main fabric : Polyester / Elastane Tech fleece 94/6 - 310 94% polyester / 6%elastane

Fabric : Polyester / Viscose single jersey 65/35 - 145 For hood lining, pocket sack and necktape 65%polyester / 35%viscose

**WEIGHT :**

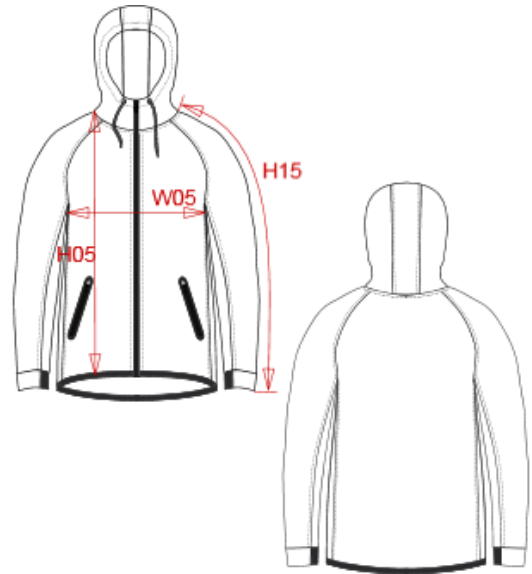
Main fabric : 310 gsm

Main fabric : 310 gsm

Fabric : 145 gsm

**ARTICLE WEIGHT :**

705 gr/pc



DESCRIPTION	
<b>Français :</b>	Veste capuche homme
<b>English :</b>	Men's performance hooded sweatshirt
<b>Nederlands :</b>	Herenjas met capuchon performance
<b>Deutsch :</b>	Herren-Funktions-Hoodie
<b>Español :</b>	Chaqueta de chándal performance con capucha de hombre
<b>Italiano :</b>	Giacca Performance Uomo con cappuccio
<b>Português :</b>	Casaco com capuz performance

COLORS	PANTONE SERIGRAPHIE
Deep grey heather	Based on 447C
Black	Black
French navy heather	Based on 432C
Ash heather	Based on Warm gray 1C

MEASUREMENT							
Description	XS	S	M	L	XL	XXL	3XL
<b>H05 (M)</b> Hauteur totale au milieu devant/ Total height on middle front	66	68	70	72	74	76	78
<b>W05 (M)</b> 1/2 largeur poitrine / 1/2 chest width	48	51	54	57	60	63	66
<b>H15L (M)</b> Longueur manche longue avec poignet / Long sleeve length with cuff	74,25	76	77,75	79,50	81,25	83	84,75

CARE LABEL				

PACKING	
Box	15 pcs / box XS => L:60cm W:40 cm H:25cm GW:9kg NW:8kg S => L:60cm W:40cm H:25cm GW:9.5kg NW:8.5kg M => L:60cm W:40cm H:25cm GW:10kg NW:9kg L => L:60cm W:40cm H:25cm GW:10.6kg NW:9.6kg XL => L:60cm W:40cm H:25cm GW:11kg NW:10kg XXL => L:60cm W:40cm H:25cm GW:11.5kg NW:10.5kg 3XL => L:60cm W:40cm H:25cm GW:12kg NW:11kg